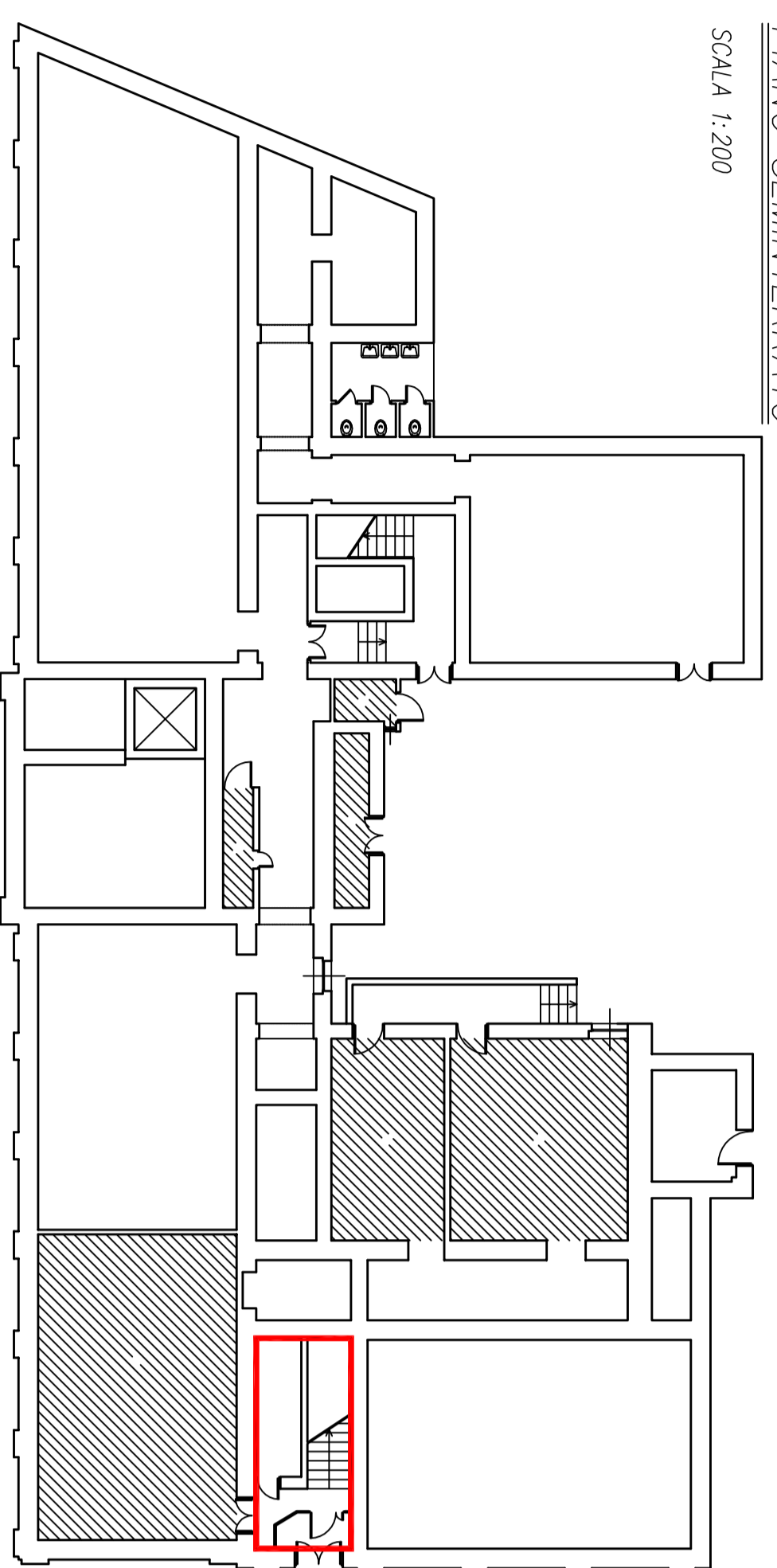


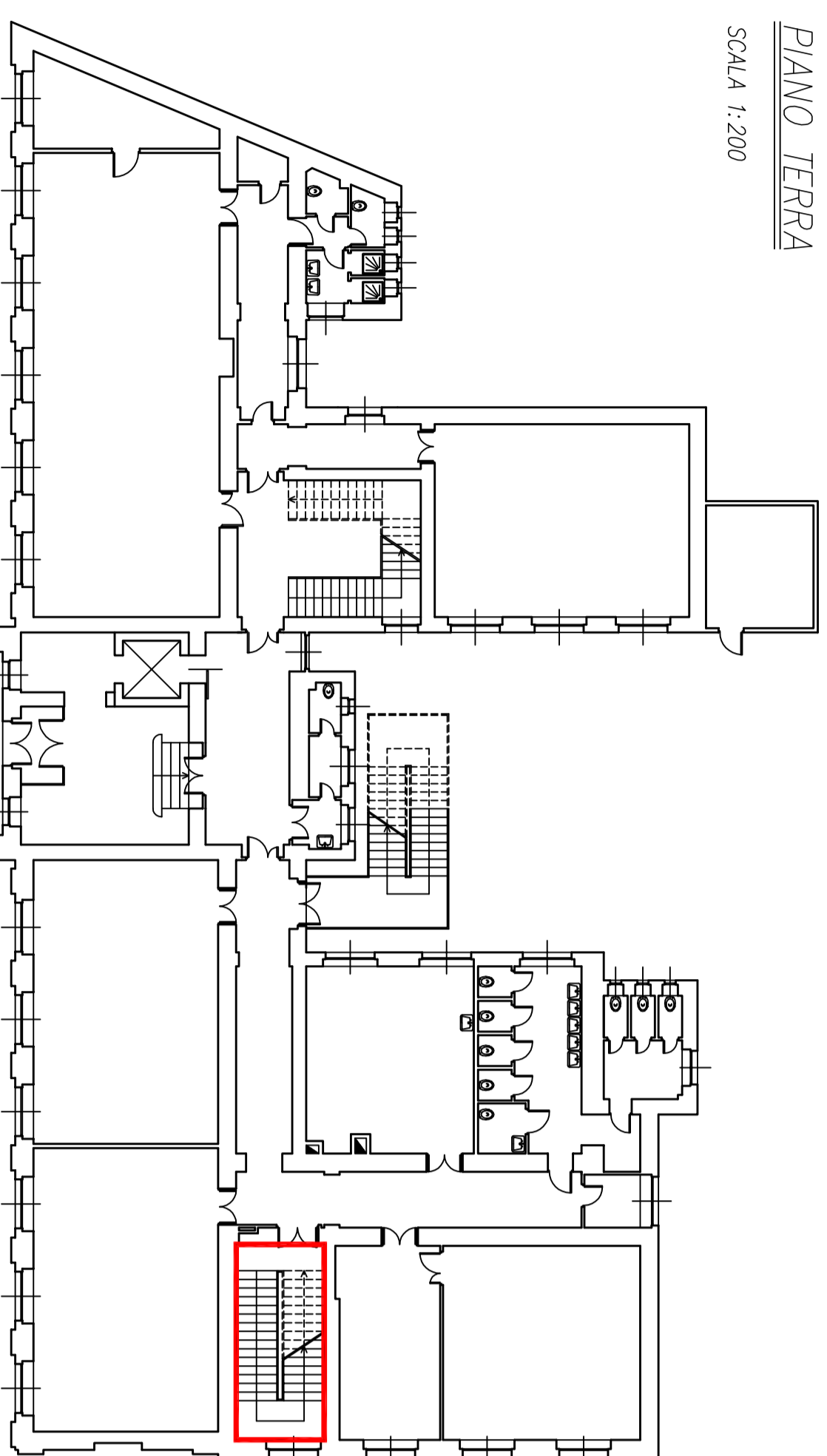
PIANO SEMINTERRATO

SCALA 1:200



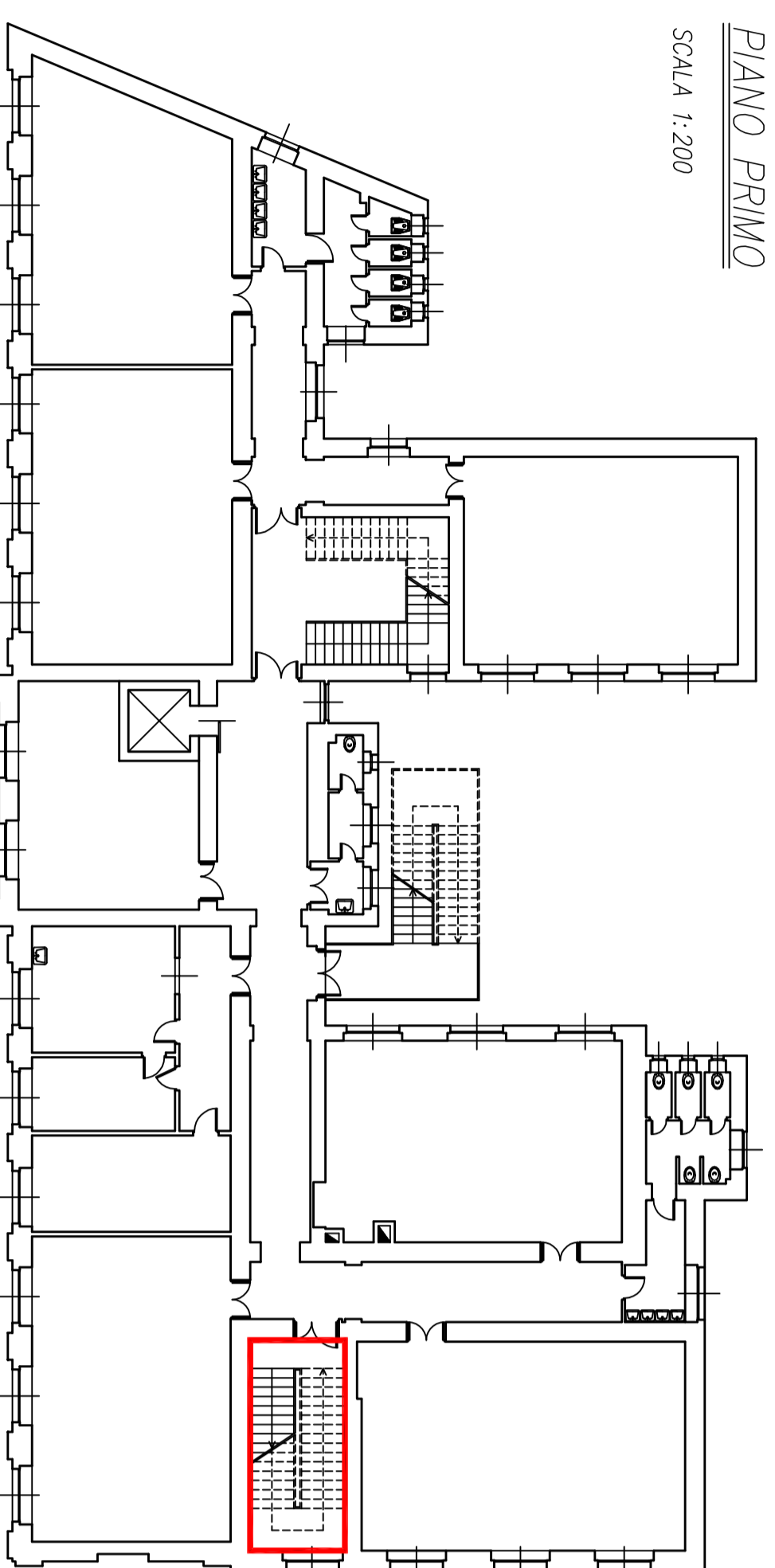
PIANO TERRA

SCALA 1:200



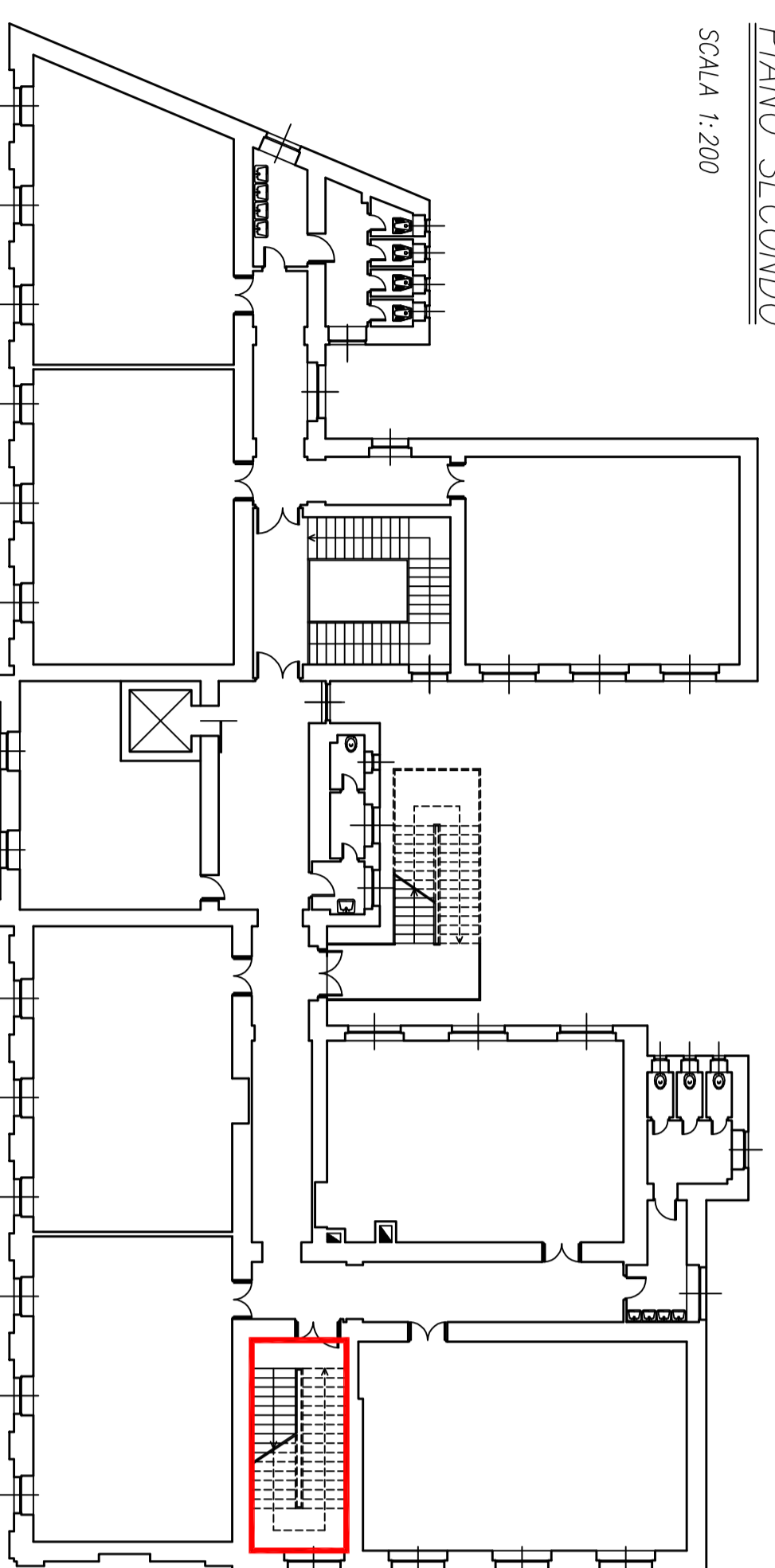
PIANO PRIMO

SCALA 1:200



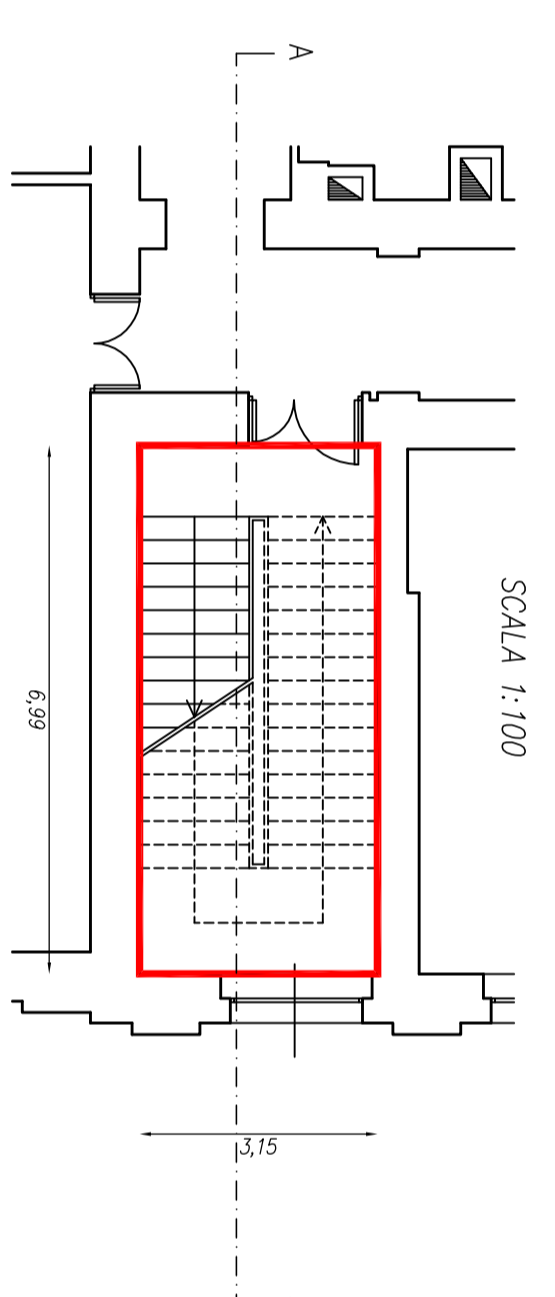
PIANO SECONDO

SCALA 1:200



PIANTA TIPO VANO SCALE

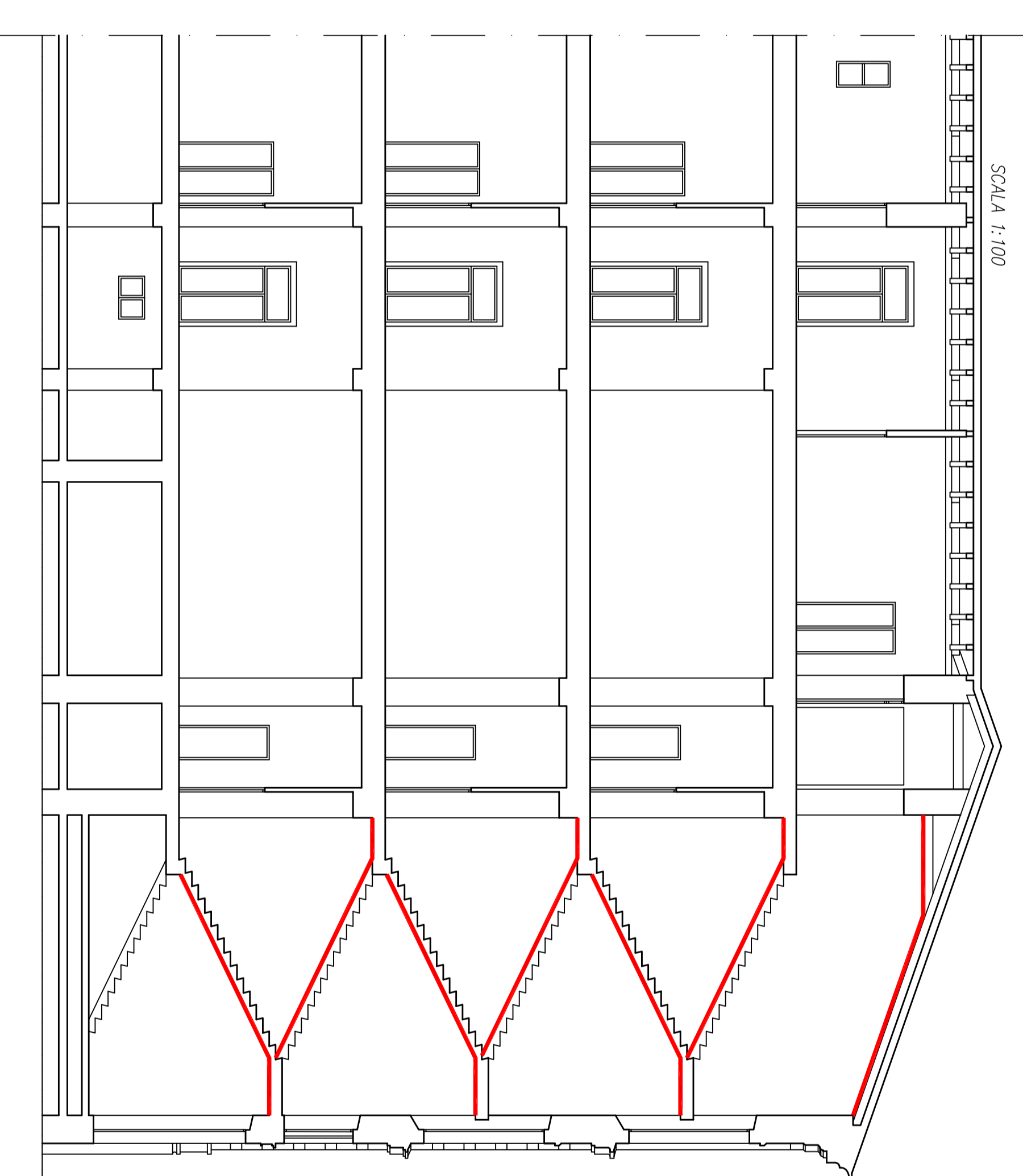
SCALA 1:100



— ZONA OGGETTO DELL'INTERVENTO  
DI CONTROFFITTATURA DI TUTTE LE RAMPE  
E PIANOTTOLI DEL VANO SCALE E  
RIFACIMENTO DEGLI INTONACI AMMALORATI

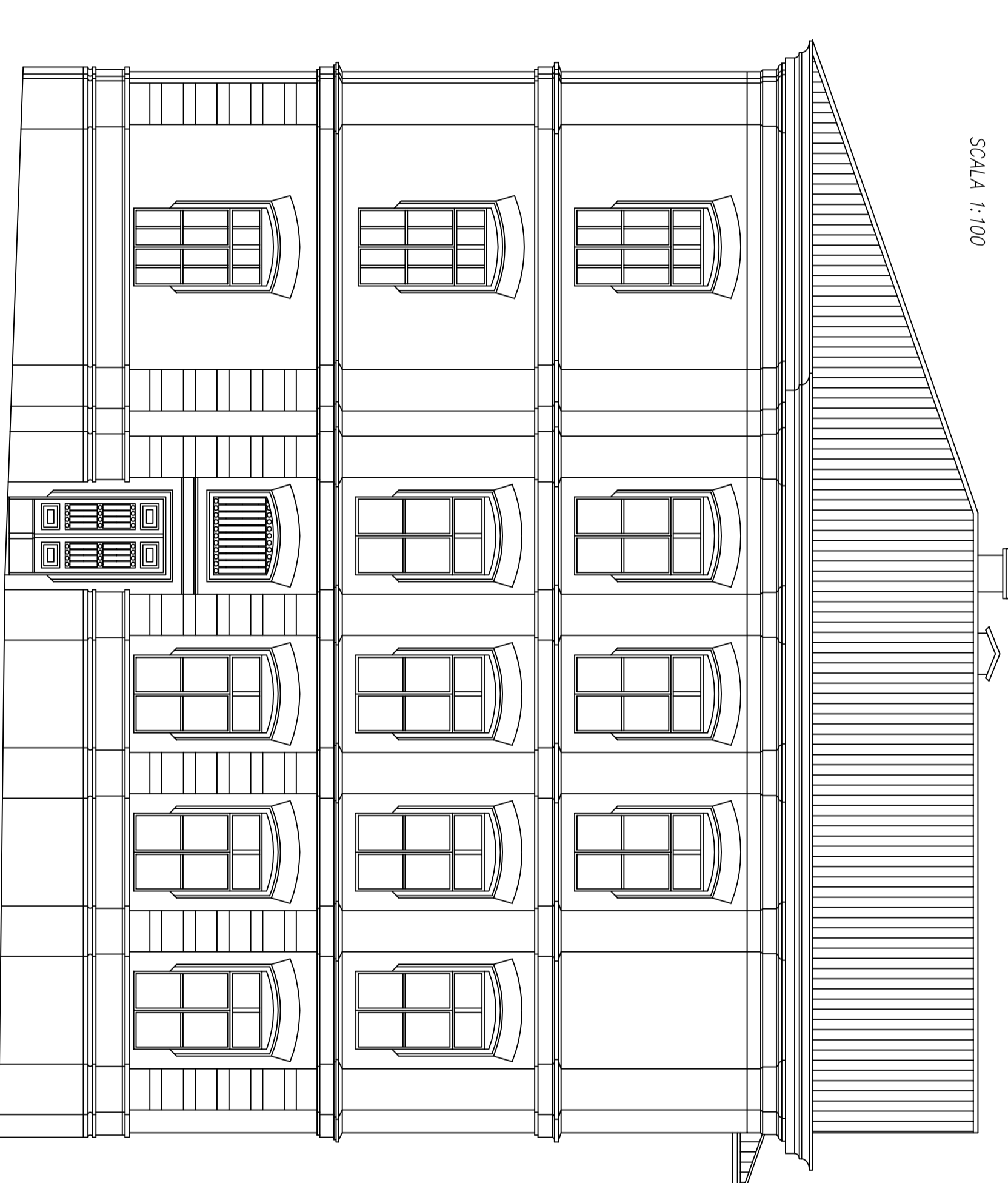
SEZIONE A-A

SCALA 1:100

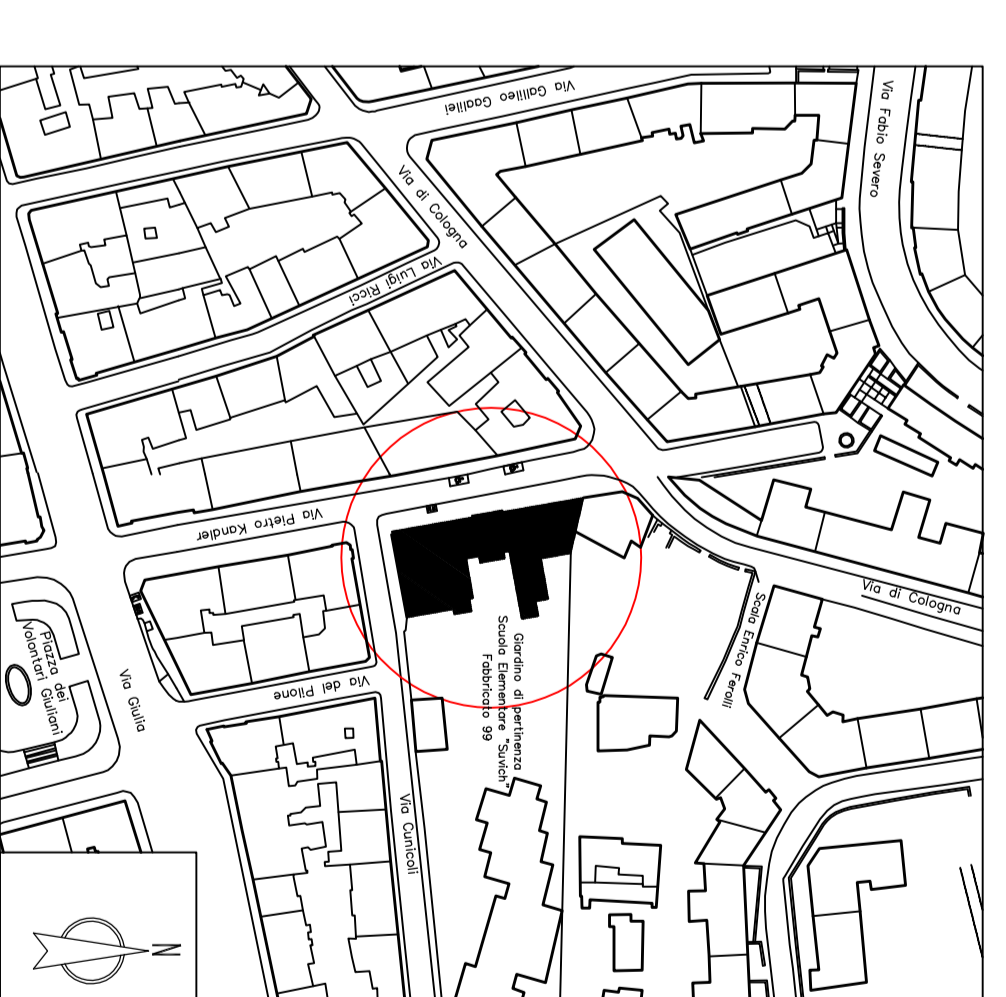
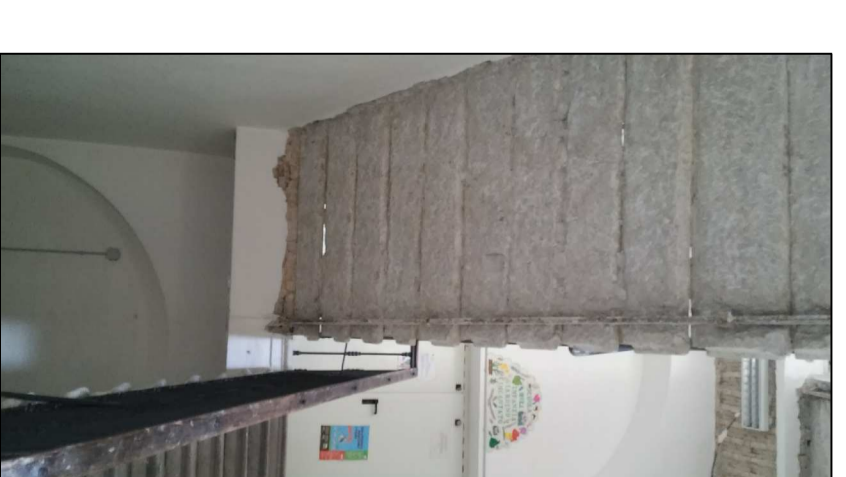
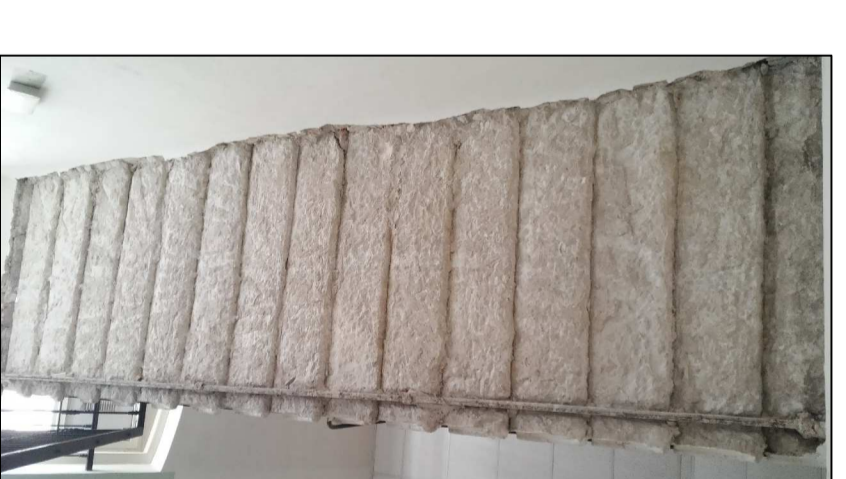


PROSPETTO

SCALA 1:100



DOCUMENTAZIONE FOTOGRAFICA



AREA LAVORI PUBBLICI  
SERVIZIO EDILIZIA SCOLASTICA

CODICE OPERA 16082 - SCUOLA SILVICH  
COMPLETAMENTO DEI VANI SCALE

PROGETTO

geom. Luigi Stacchi

geom. Adriano Tius

DISEGNATORE

geom. Adriano Tius

RESPONSABILE DEL PROCEDIMENTO

dot. Enrico Cefis



PROGETTO ESECUTIVO

TITOLO

2

PLANIMETRIE, PROSPETTO E SEZIONE

VARIE

DATA OTTOBRE 2016

Trieste